



BLUE MOUNTAINS CREATIVE ARTS CENTRE NEWSLETTER

July 2019

WEB SITE: [www.bmcac.org.au](http://www.bmcac.org.au)

FACEBOOK: [bmcacsaturdaypotters](https://www.facebook.com/bmcacsaturdaypotters)



Beautiful Wares on Offer.



New Signage.

**Saturday 10am - 4pm**  
Corner of Hare and Moore St,  
Glenbrook

Hare St. Gallery is a co-operative run by BMCAC Members to showcase their creative work.

**Pottery, Paintings, Drawings,  
Photography, Jewellery,  
Sculpture, Prints and hand  
crafted items will be  
available for sale.**

If you are looking for something that is unique, locally made & produced then Hare St. Gallery is the place to shop.

[www.bmcac.org.au](http://www.bmcac.org.au)



## CONTENTS

3	President's Report
4	Pottery Facilitator's Report
5/6	Annual Members Exhibition, 20 & 21 July
7	Blue Mountains Art Prize
8	Blacktown City Art Prize
9	BMCAC Gallery Membership
10	Life Drawing Report
11	Gardening & Maintenance Report
11	Richard's Musings
12/13	What's On?

## FROM THE EDITOR

The extended nights in the depth of winter may not only bless us with prolonged slumber but with an opportunity to think over our commitments and relationships, about what we give and receive. Despite cosy beds and central heating we might lie awake, gratefully envisaging our fellow humans whose efforts and dedication promote learning and exploring, creativity and sharing inspired, pleasurable activities.

It is in this spirit that some participants in our arts groups have approached me recently to express sincere thanks to all the committee members for their continued voluntary contribution of time and effort in running the BMCAC.

Thanks are also due to Art Sup for donating \$100 towards the cost of our new Hare Street Gallery signs, as well as to Alan Campbell for putting them together.

And we gratefully acknowledge our other sponsors:

ANALA Art Advisory, sponsoring our Blue Mountains Art Prize for \$2000,

\$150 from Susan Templeman,

\$150 from Stuart Ayres,

a \$100 voucher from Picture Framing Warehouse and

a \$50 voucher from Eckersley's.

The sharing of creative efforts through our exhibitions is very close now. If you wish to partake you'll find dates for registration and delivery of art works on pages 5 to 8.

Good luck to all the participants.

Rudi Christen

## PRESIDENT'S REPORT *Alison James*

Dear Members,

Our members annual exhibition is just a few days away now and is always a great opportunity to see the artwork of our many members. I look forward to it each year and it never fails to impress. With that in mind I hope everyone is busy getting their artworks ready.

The Hare St. Gallery members' co-op is doing well and reached a milestone with its Facebook presence this week. We also now have beautiful signage, with Art Sup in Kingswood donating \$100 towards our signs and Alan Campbell building the frames for us. They are lightweight and look fantastic!! And when placed on the corner of Hare St and the highway they are attracting visitors to the gallery. There's been positive feedback about the gallery being back, with locals saying that they had missed it being there.

The Blue Mountains Art Prize is just over a month away and we have been sponsored \$2,000 from Anala Art Advisory, \$150 from Susan Templeman, \$150 from Stuart Ayres, a \$100 voucher from Picture a Framing Warehouse and a \$50 voucher from Eckersleys. All costs for the art prize are covered. Our judges will be Kelly Heylen and Robert Linigen. Don't miss out, make sure you get your entries in. Entry forms are on our website [www.bmcac.org.au](http://www.bmcac.org.au)

The art storage room is pretty much complete with a new sink, great storage and space for all of our easels to be stored neatly. The guys have done a fantastic job, now we just need to go through the supplies and clean out the unnecessary.

Work has also begun in the pottery yurt with new sink area, hot water and air con going in. This may cause a few disruptions but the benefits will be worth it. The back of the main building has now also been painted thanks to a David Atwood's willingness to climb the ladder and paint at such heights.

We've had some kiln issues that Bronwyn will most likely elaborate on in the pottery report but needless to say they are essential to the classes that are most popular and need to be repaired as quickly as possible.

Apart from our kilns everything else appears to be running along fairly smoothly and there has been some great feedback and ideas for the committee to consider.

The second part of our year has started and from here on it always seems to fly past.....just remember to stop and take a minute to appreciate the rewards of all the hard work that either you or others are putting in.

Your president

Alison James

"The aim of art is to represent not the outward appearance of things, but their inward significance."

Aristotle

Finally the kilns have been looked at by our new repairman, Andrew Tomas.

He has replaced the two burnt out elements in Mother Bear (our old kiln) and will replace the thermocouple and repair the door seal this coming Thursday. Father Bear (The big kiln) will get a new thermocouple, a new door seal and all its elements replaced due to the fact that previously they had been replaced with inconsistent elements, resulting in differing resistances in many of the elements, causing uneven firings. As you can appreciate, this will come at quite a considerable cost of about \$2,000, but Andrew has given us a special rate both for the elements and the service calls and has agreed to let us make payments in three instalments. We thank him very much for his generosity.

*Just in case you are in a situation sometime in the future that you want to replace elements in your own kiln and are tempted to create your own elements or are buying elements to install, some facts you need to know are: resistance in an element creates the heat and resistance depends on grade of wire, number of coils, distance apart of coils and diameter of coils. If any of these factors differ then the coils will have different resistances and will cause uneven firing temperatures within the kiln.*

Once again the David's have been hard at work and the renovation of the pottery room has begun. The water heating system and taps have been installed and the new cupboard system is well on the way. Unfortunately, some space has been sacrificed for the water heater as it was felt it might be vandalised if installed outside the room. It was decided, due to the complexity of the clay trap system and the expense of replacing our perfectly good sinks, that the sinks and attached cupboard would not be replaced. The cupboard will get a fresh spray paint, door fixed and should look good as new.

## USING THE POTTERY ROOM

Once again we would like to remind each group using the pottery room to please leave the room as tidy and as clean as possible. If you use any equipment, **especially the extruder**, it is your responsibility to clean it after use. A bottle brush has been purchased to aid cleaning it. Could teachers please check it if a class member has used it.

Please do not leave dirty towels in the pottery room. Reusing an already dirty towel is a health hazard. Each time it is moved it gives off clay dust that you and your fellow potters are breathing in. There is an errant filthy pale green towel floating around that I have washed a couple of times now. If you own it please take it home.

There are a number of dried out half finished pieces left on the Monday shelves that don't appear to belong to any of the Monday group, if they belong to you please remove them or they will be binned. Some pieces have already been discarded because they have been taking up space for over a term with no apparent owner. If you need to leave pieces on the shelves it would be helpful if you left your name and date. Only put work on the shelves that have been allocated to your group.

I have asked Rudi to re publish our flier and exhibition details. Please read them carefully. Don't forget to contact me if you wish table space: [a.b.campbell@optusnet.com.au](mailto:a.b.campbell@optusnet.com.au)

Looking forward to seeing you at the exhibition.

Bronwyn



# **BMCAC MEMBERS' EXHIBITION**

## **Glenbrook Theatre Hall**

### **20<sup>th</sup> 21<sup>st</sup> July**

Our Annual Members' Exhibition is fast approaching so below are some important details for exhibitors:

The exhibition will be open from 9am – 5pm both days.

- Any member can exhibit.  
Remember you can exhibit anything you have handmade. Not all items have to be for sale. Just put NFS on the item (not for sale).
- Please let me know by Wednesday 17<sup>th</sup> July if you require table space.
- Every item must have a sticker with a catalogue number e.g. BC1  
(Your initials and a number).
- Every item must be put on a catalogue sheet to hand in when you drop items off. I have attached a copy of the catalogue.
- Every exhibitor must take a turn on the weekend roster. Please put your name on it when you deliver your items.
- **ARTISTS** hang work from 1-3 pm Friday the 19<sup>th</sup>
- **POTTERS** set up tables 3-5 pm Friday the 19<sup>th</sup>

If you can't make those times contact a friend to deliver your pieces for you.

- Bring greenery and flowers on Friday arvo or 8:30 am Saturday morning.
- Bring a plate of something yummy for the breakfast opening. Apple cider and orange juice will be supplied.

Any questions at all email me on [a.b.campbell@optusnet.com.au](mailto:a.b.campbell@optusnet.com.au)  
or ring 0411041054



Here's to a successful exhibition. Cheers.

Bronwyn Campbell

Secretary and Pottery Facilitator

**BLUE MOUNTAINS CREATIVE ART CENTRE  
ANNUAL MEMBERS' EXHIBITION**

[illegible]

**SIGNATURE** \_\_\_\_\_

PRINTED NAME

**PHONE** \_\_\_\_\_

\_\_\_\_\_



## Artist Call Out

Entries Open

May 1st - Aug 1st

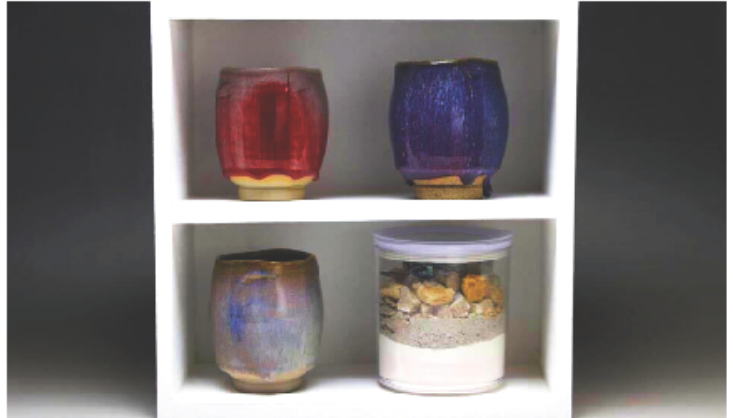
Entry fee \$25 per entry

Entry forms available at [www.bmcac.org.au](http://www.bmcac.org.au)

**Opening Night 9th of August**  
Blue Mountains Creative Arts Centre  
Hare St. Glenbrook

Blue Mountains Art Prize \$1,000  
Sponsored by Anala Art Advisory

Sadie Foster Prize \$150  
Barbara's Dahl Prize \$150  
Roy Brook Prize \$150



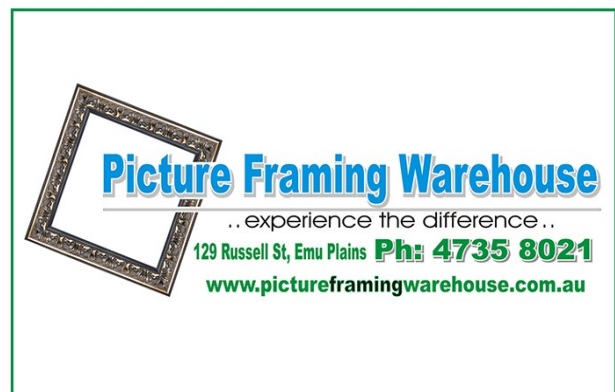
Proudly brought to you by Blue Mountains Creative Arts Centre, a not for profit organisation

Image of Rob Linigen's winning 2018 entry

## Our SPONSORS



6 Ross Street, Glenbrook  
0452 586 448  
[www.analaartadvisary.com.au](http://www.analaartadvisary.com.au)



Shop 7, 98 Manning Street, 2747 Kingswood  
(02) 4736 5866

Of course, more **SPONSORS** are always welcome.

Please contact Elizabeth Bryden at [ebryden@bigpond.com](mailto:ebryden@bigpond.com)

# Blacktown Arts



**Entries for the 2019 Blacktown City Art Prize are now open.**

Now in its 24th year, the **Blacktown City Art Prize** is a highly valued art prize, with cash prizes and acquisitive awards. Artists from all over Australia are invited to submit entries in drawing, painting, sculpture, ceramics and mixed media.

The winner of the **Blacktown City Art Prize** will receive \$15,000.

3 supporting prizes will also be awarded:

- Aboriginal Artist Prize (\$2,000)
- Local Artist Prize (\$2,000)
- People's Choice Prize (\$1,000).

This year, the winners of the **Local Artist Prize** and **Aboriginal Artist Prize** will also have the opportunity to undertake a 2-month residency in one of Blacktown Arts' Main Street studios.

Selected artworks will be exhibited at The Leo Kelly Blacktown Arts Centre from Saturday 30 November 2019 - Saturday 25 January 2020.

**Entries close at 5 pm on Tuesday 8 October 2019.**

**Our address is** 78 Flushcombe Road BLACKTOWN NSW 2148

**Our telephone number is** 02 9839 6558





**ARE YOU INTERESTED IN BECOMING A BMCAC CO-OP GALLERY MEMBER?**

The first 3 months of our co-op are coming to a close and it is time for the present members to recommit to the next 3 months.

We have space for some additional members, so if you are a member of the BMCAC and interested, please check out the BMCAC website for applications. Submit your application to Ingrid with a profile and some photos of your work for consideration.

We are slowly building our profile and have had a steady stream of visitors. Comments have been full of praise.

Artist wall space is approx 1m x 1.5m. We have room for 4 more artists.

Potters have approx. 1m x 1m with extra space for plinth pieces. We have room for a few more potters.

**Our next 3 months period is from 24th August - 9th November**

The cost of renewal is \$65. For new members it is \$75, which includes a one off \$10 advertising fee.

If we feel we have enough members, it may be possible for us to open both Saturday and Sunday for the next 3 months.

If your work is accepted, you will be notified when and where to drop off work.

The committee will set up the new display. Your work may not necessarily be displayed together in one group.

**Your Gallery Committee**

Alison James

Katherine Kennedy

Bronwyn Campbell

Ingrid Russell

## LIFE DRAWING REPORT *Joy Myers Creed*

The Members Annual Exhibition is taking place at the Community Hall Glenbrook on 20<sup>th</sup> to 21<sup>st</sup> July, and our group has planned to hang some of their works there at 1pm after the life drawing session on Friday, 19th July.

Drawers are also planning for the BMCAC Art Prize Exhibition from 9<sup>th</sup> to 11<sup>th</sup> August . There will be no life drawing session on that Friday 9<sup>th</sup>.

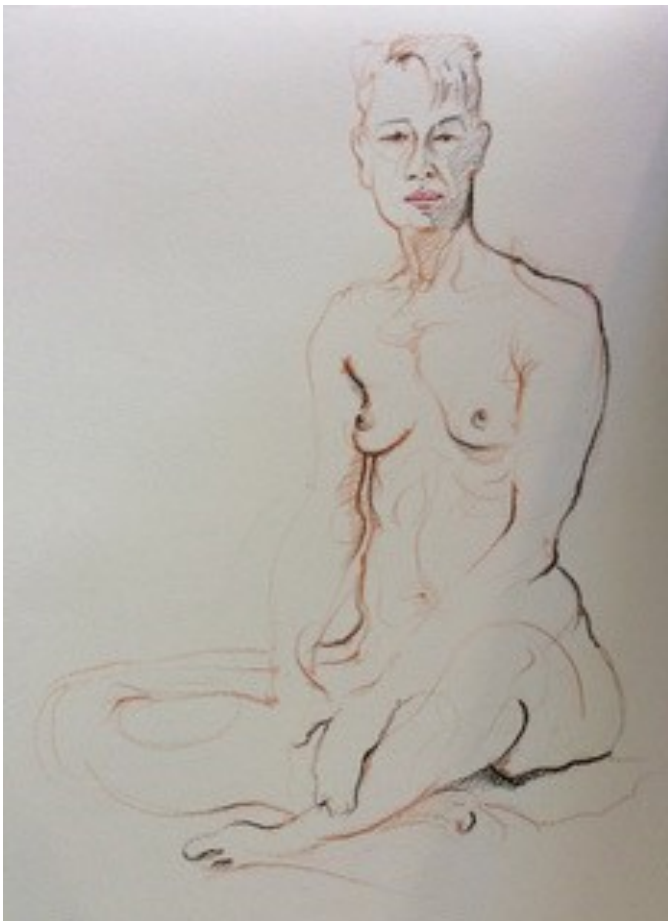
Six weeks later there will be the Annual Life Drawers "Body and Soul 2019 Exhibition", from 20<sup>th</sup> to 22<sup>nd</sup> September. There will be no drawing meeting on that Friday either, as we will be hanging and displaying at the Community Hall all our best works for 2019 on that morning from 10am to noon.

Drawer numbers still continue to be good so I will organise a double (two models) session soon and I'd like to assure newcomers it's not twice as hard.

Please give me a ring if you have any enquiries or questions on 0247392413 .

Sincerely Joy Myers Creed

Illness stopped Richard Cutler and Joy Myers Creed in their tracks for a while. Despite this Richard set up the tables in our customary arrangement and turned on the heaters early on Friday mornings, much appreciated in the cold weather, especially by the models. And Joy continued organizing models for our life drawing group. Both were missed and we are grateful for them to be back with us now. (Ed.)



Life drawing by member Janet Saunders



Members of the Life Drawing Group: Joy, Brenda and Rudi

## GARDENING, BUILDING & MAINTENANCE REPORT *Elizabeth Bryden*

Last week I replanted the agapanthus near the path after the Davids were kind enough to bring me some good soil as a backfill to the brick retaining wall which they had previously built. Just in time for the rain. So it is looking good and regular rain will help me avoid having to water early in the morning which is the only time that I can get there. Much too cold after 4pm and it is getting dark too early.

Currently the two Davids are working on the pottery yurt cupboards and installing hot water which will be welcomed by the potters. This should be completed soon. More improvements to come but on condition that our wonderful volunteers hold up and the funds are available. So many improvements to date which would not have happened without David Russell and David Attwood.



Roof Maintenance



## The Way of Drawing through Sensuality

Say, one has noticed that life is a bit too cut and dried, that the personal touch is lacking. At that point there is a way back to the personal through sensuality. But how to get there? If one demands wonder and sensuality as its expression, one must bypass one's planning mind, see whole and free one's hand. The hand in some way stands for the body with its heart at the centre.

When we wanted something as young children, our hands went out. So, what does one do to free one's hand? Basically, one learns to scribble freely. Scribbling really means not doing the same thing twice. Reality is made up of many different qualities and to be able to move from one to another freely is the trick. On the way sensuality is also developed. If one is seeing whole by gawking like a child does when it stares at you, one is letting in qualities and impressions, instead of nominating and controlling them. Once they are in, one's free hand automatically creates and sensuality, the love of the senses, welcomes one with its beautiful generosity.

One needs to concentrate on the gesture or life in things and use only enough means to express this gesture. My favourite gospel saying is "Be ye hot or cold for the lukewarm will be spewed out of God's mouth" (Rev.3.16). And who are the warm but those who only try to please others and refuse to develop their own genuine personality and express it.

"He who works with his hands is a labourer.  
He who works with his hands and his head is a craftsman.  
He who works with his hands and his head and his heart is an artist."

*Saint Francis of Assisi*

"Colour possesses me. Here is the meaning of the happy moment:  
Colour and I are one. I am a painter."  
"One eye sees, the other feels."

*Paul Klee*

## WHAT'S ON ?

Galleries, Exhibitions, Workshops, Prize Entries, Coming Events

### WORKSHOPS

17 <sup>th</sup> July	Jane Tadrist – Enamelling
31 <sup>st</sup> July	Katherine Kennedy – Print Making
1 <sup>st</sup> August	Christopher Vidal – Painting
21 <sup>st</sup> Sept.	Jane Tadrist – Silver Ring Jewellery

Please check the [BMCAC website](#) for further details.

### IMPORTANT DATES

20 <sup>th</sup> July	Enrolment Day, conducted at the Glenbrook Theatre Hall coinciding with our Members' Exhibition.
20 <sup>th</sup> and 21 <sup>st</sup> July	Members Exhibition
22 <sup>nd</sup> July	Term 3 starts with a week break in week 3.
1 <sup>st</sup> August	Next Committee Meeting, 7.30pm
9 <sup>th</sup> to 11 <sup>th</sup> August	BMCAC Art Prize Exhibition *
20 <sup>th</sup> to 22 <sup>nd</sup> Sept.	Life Drawing "Body and Soul" Exhibition
19 <sup>th</sup> Oct.	Celtic School is hiring the hall for an event.
20 <sup>th</sup> and 21 <sup>st</sup> Oct.	Pottery Exhibition "Clay Creations"
26 <sup>th</sup> and 27 <sup>th</sup> Oct.	BMCAN Arts Trail **
7 <sup>th</sup> and 8 <sup>th</sup> Nov.	Nepean Potters' Exhibition
1 <sup>st</sup> to 3 <sup>rd</sup> Nov.	Blue Mountains inaugural Print Exhibition

#### \* BMCAC ART PRIZE

**Art Prize Entries are due by the 1<sup>st</sup> August**

**Deliver entries to the Centre by the 5<sup>th</sup> August**

Work will be hung or installed by between 6 -9<sup>th</sup> of August

#### \*\* Arts Trail

Some members are proposing to use the main room of our Centre to become part of the trail. If you wish to participate you must join BMCAN first and let Ingrid know you are participating.

Individual participants will not be listed in the BMCAN advertising. You will be listed as the group BMCAC.



## BRAEMER HOUSE & GALLERY

104 Macquarie Road, Springwood 2777

11 July – 4 August	Vanessa Whittington	<i>North &amp; South: Australian Landscape Journeys</i>
	Steve Tredinnick	<i>Out of the Blueys</i>
	Rod Julian	<i>Australian Birds: Lucky Captures</i>

## BLUE MOUNTAINS CULTURAL CENTRE

30 Parke Street, Katoomba 2780

29 June – 11 August	Simon Reece	<i>Flotsam and jetsam</i>
---------------------	-------------	---------------------------

Simon Reece's exhibition *Flotsam and jetsam* is about rubbish, debris, detritus and how it impacts us but also reflects us and who we are. In the universe, cosmik debris is scattered throughout. This space waste becomes the building blocks for the universe itself. Something bigger is formed from this rubbish. However, our climate malaise is brought about by waste which is also creating something bigger. In this case, large blooms of jellyfish are appearing and highlight the detrimental warming of the oceans and the collapse of ecosystems.

At the centre of Reece's new body of work, which includes ceramic and mixed media sculptural objects, sits a large scale jellyfish bloom giving shape to the terrifying beauty that is consuming our oceans. Small pieces of natural sponge collected from the beaches are made into cosmik debris, highlighting the wonder of the universe and how we inhabit it, and how repurposing our waste can be transformative.

## KERRIE LOWE GALLERY

49 – 51 King Street, Newtown  
# 02 9550 4433

28th June - 23 July	Geoff Crispin	<i>Last of the Long Flame</i>	Contemporary Ceramics
---------------------	---------------	-------------------------------	-----------------------

"The greater the artist, the greater the doubt.

Perfect confidence is granted to the less talented as a consolation prize."

(*Time Magazine*, June 10, 1996 )

*Robert Hughes*